



CHC30121
**Certificate III
 in Early Childhood
 Education
 and Care**



Who is this course for?

The NSW Department of Education has recognised our organisation as a High Performing Provider.

This course will teach you how to work collaboratively with educators to provide care and support to children. Successful completion of this course may lead to career opportunities as a family daycare worker, early childhood educator, playgroup supervisor, team leader, childhood educator or childhood educator assistant.

There are no entry requirements for this qualification. However, you will need a current Working with Children Check and double COVID vaccination.

This course is available to all participants as a traineeship as well as under the Smart and Skilled initiative of the NSW Vocational and Educational (VET) system.

To be eligible for funding, you must:

- Be an Australian citizen, permanent resident or humanitarian visa holder
- Be aged 15 years or older
- Live or work in New South Wales
- Have left school and have no previous qualifications at Certificate IV or higher.

You will require the Language Literacy, Numeracy and Digital skills to:

- Read and comprehend the course learning content
- Conduct a basic internet search
- Engage in online learning, including video conferencing sessions
- Use a range of software to communicate electronically and create simple documents.

You may be required to have access to:

- A computer or laptop
- The internet
- Word-processing, presentation, email and spreadsheet software.



This training is subsidised by the NSW Government.

To check your eligibility contact MTC Australia or visit SmartAndSkilled.nsw.gov.au

Course Information

Duration and Delivery Mode:

This is a self-paced course and can take up to 12 months to complete. The training sessions are delivered face-to-face and online through Microsoft Teams and are arranged by the trainer. The self-paced learning is through our online learning platform and requires approximately 10-15 hours study per week.

Practical placement hours:

Minimum of 120 work hours in a registered Child Care Centre is needed to be completed as part of this course.

Core units

UNIT CODE	UNIT NAME
CHCDIV002	Promote Aboriginal and/or Torres Strait Islander cultural safety
CHCECE001	Develop cultural competence
CHCECE002	Ensure the health and safety of children
CHCECE003	Provide care for children
CHCECE004	Promote and provide healthy food and drinks
CHCECE005	Provide care for babies and toddlers
CHCECE007	Develop positive and respectful relationships with children
CHCECE009	Use an approved learning framework to guide practice
CHCECE010	Support the holistic development of children in early childhood
CHCECE011	Provide experiences to support children's play and learning
CHCECE013	Use information about children to inform practice
CHCLEG001	Work legally and ethically
CHCPRT001	Identify and respond to children and young people at risk
HLTAID004	Provide an emergency first aid response in an education and care setting
HLTWHS001	Participate in workplace health and safety

Elective units

Elective selection may vary according to customer requirements.

UNIT CODE	UNIT NAME
CHCPRP003	Reflect on and improve own professional practice
CHCECE012	Support children to connect with their world
CHCECE026	Work in partnership with families to provide appropriate education and care for children

Why choose this course?

Our trainers are both experienced and approachable, and will work closely with you to help you achieve your goals. Gain confidence with new skills, a certification, and a clearer career path for your future. Our flexible, blended delivery model allows students to fit their study in around other commitments.



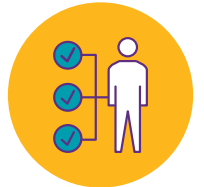
Practical Skills

The course has a strong focus on the skills needed to work in regulated children's education and care services in Australia including: Support children's wellbeing, and development, Nurture babies and toddlers, Identify and respond to children and young people at risk, Support children to connect with the natural environment.



Recognition of Prior Learning (RPL)

We recognise the prior knowledge and skills students may have gained through previous training, education or work, including formal and informal learning. Recognition of Prior Learning (RPL) is a process that assesses your competency, acquired through formal and informal learning, to determine if you meet the requirements for a unit of study.



Respect

MTC Australia celebrates the things that make us all unique and aims to make clients feel welcome, safe and supported.



Proven Results

Since 2001 we have delivered training to more than 15,000 people, empowering them to unlock their potential and create new career and life opportunities.



How to Enrol

To apply or find out more call **1300 232 663** or visit **MTCAustralia.com.au**



What we do

MTC is the social enterprise that gives people the inspiration, capability and opportunity to create a fulfilling life. We deliver high impact employment, training and youth programs that help people gain skills for employment and entrepreneurship, build self-worth, and enable possibilities for transformative change.



V15092023

MTC AUSTRALIA
Opportunities to become

T 1300 232 663
E info@mtcaustralia.com.au
W mtcaustralia.com.au

